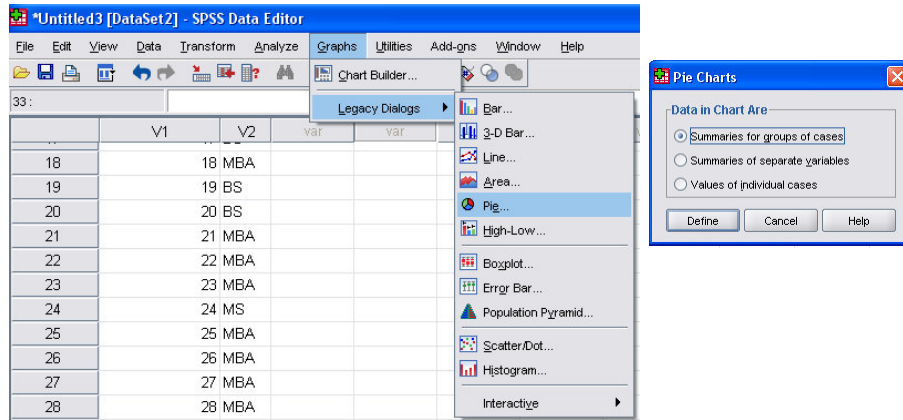
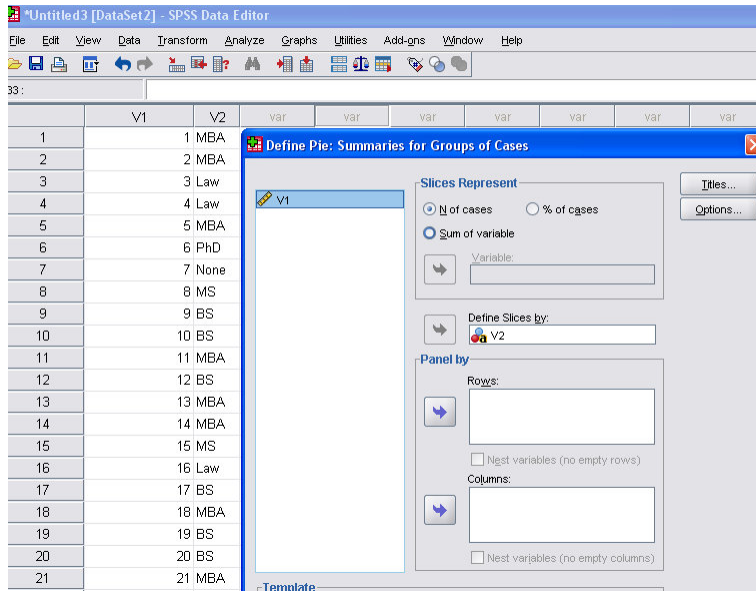
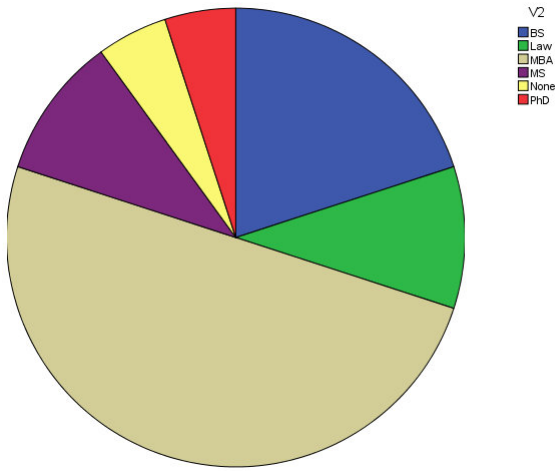


PIE CHART (for QUALITATIVE data): use data file Employee Education.xlsx



Next choose variable to draw pie chart for -

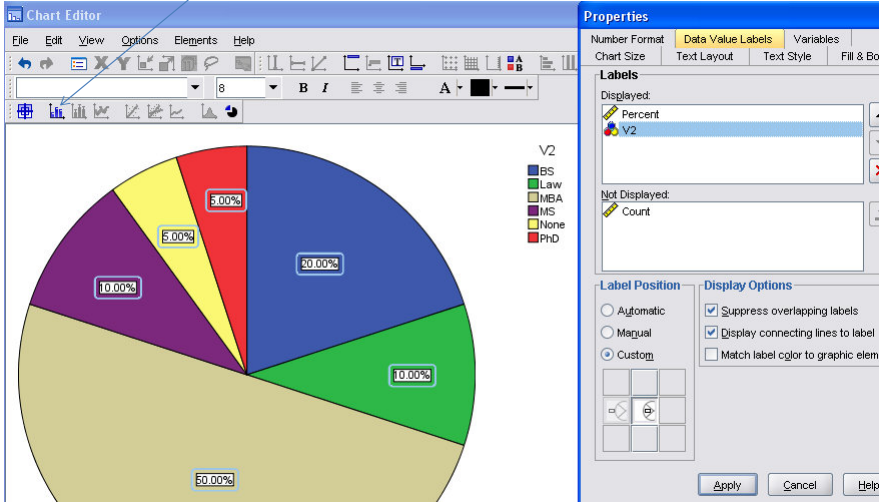




To put data labels on the slices, double click on the pie chart in SPSS OUTPUT.

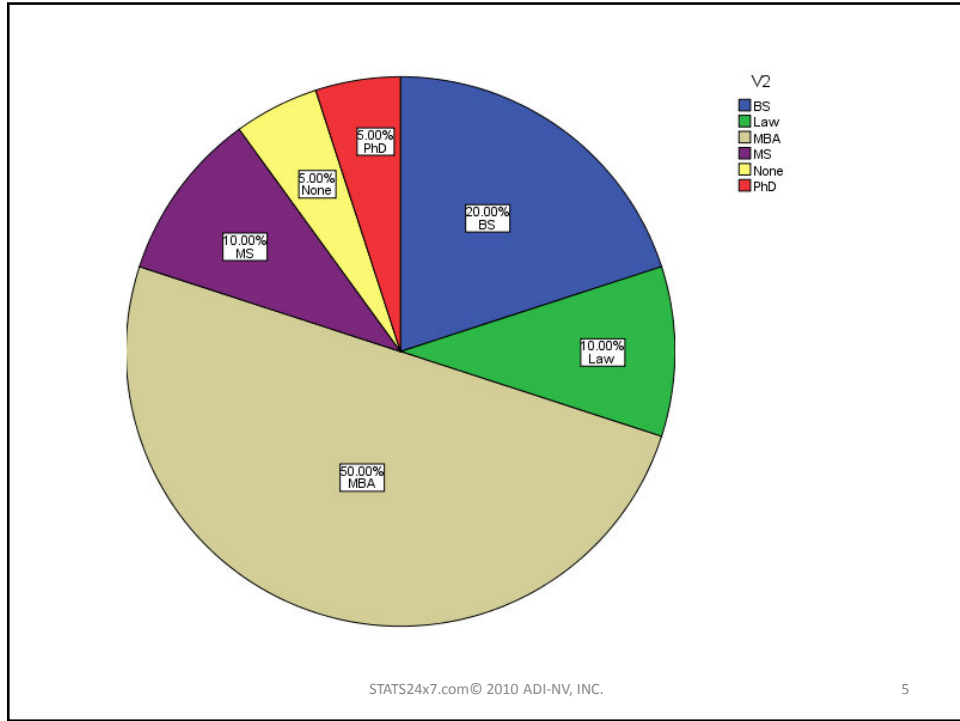
STATS24x7.com © 2010 ADI-NV, INC. 3

SINGLE CLICK on



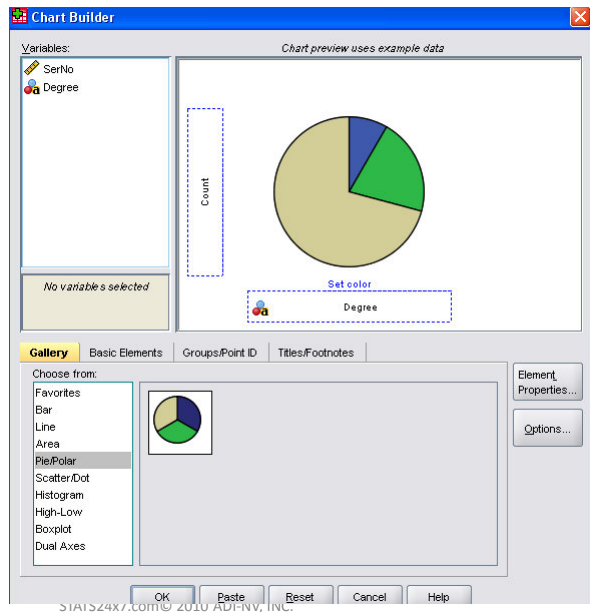
Choose PERCENT and V2 in the DISPLAYED window (on the right) to obtain -

STATS24x7.com © 2010 ADI-NV, INC. 4



The pie chart for the above example can also be obtained as follows:  
Graph/Chart Builder/Pie-Polar, then drag pie-chart icon from bottom screen to graph area:

Nextdrag 'Degree' from Variables list to x-axis as shown in the figure. This will give the pie chart shown on slide 11.

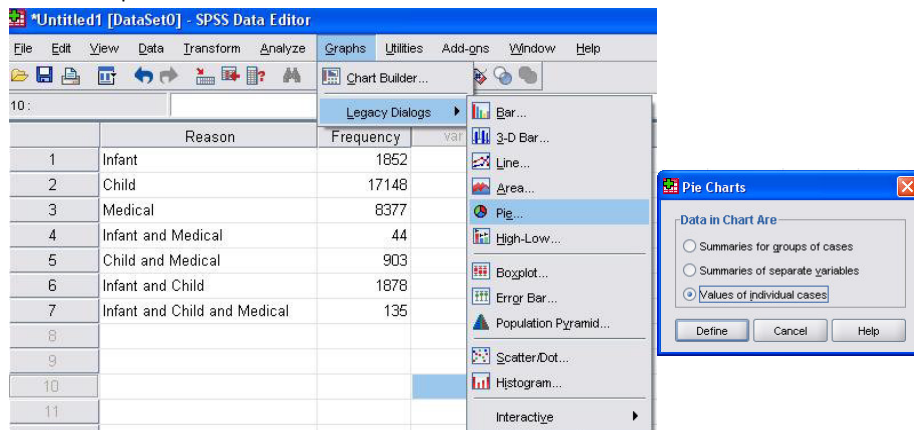


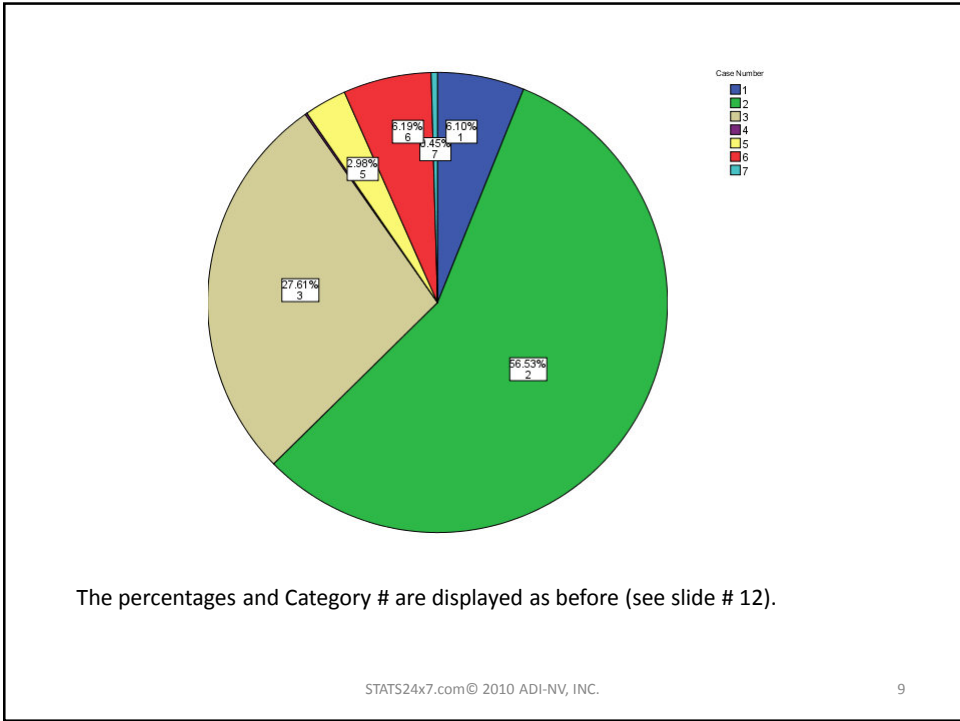
Pie Chart for Table Data: (#2.4/page 47, Text): In the following table, REASON column shows the reasons customers request installation of passenger-side on-off switch for airbags.

Reason	Feqequency
Infant	1852
Child	17148
Medical	8377
Infant and Medical	44
Child and Medical	903
Infant and Child	1878
Infant and Child and Medical	135

Graphs/Legacy Dialogs/Pie/select “Values of Individual Cases” then click on DEFINE

Slices represent variable FREQUENCY





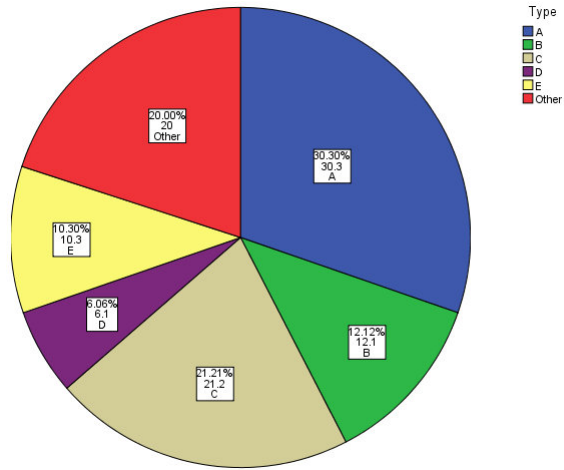
Example: Draw a pie chart for the following data:

Type	Count
A	50
B	20
C	35
D	10
E	17
other	33

Graph/Chart Builder/Pie-Polar  
 Drag TYPE to X-axis  
 and Count to y-axis

STATS24x7.com © 2010 ADI-NV, INC. 10

Use instructions on slide 11 to show %, Count, and Type on the slices.



STATS24x7.com © 2010 ADI-NV, INC.

11